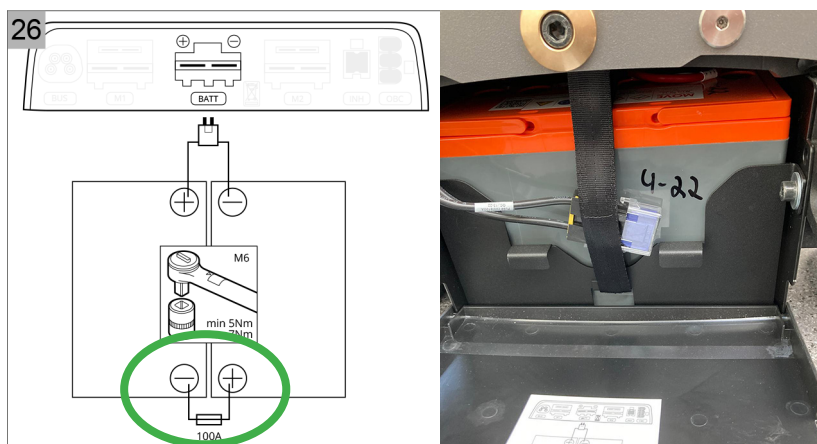


Sulake & Powermoduuli Sango Advanced

rehaco.

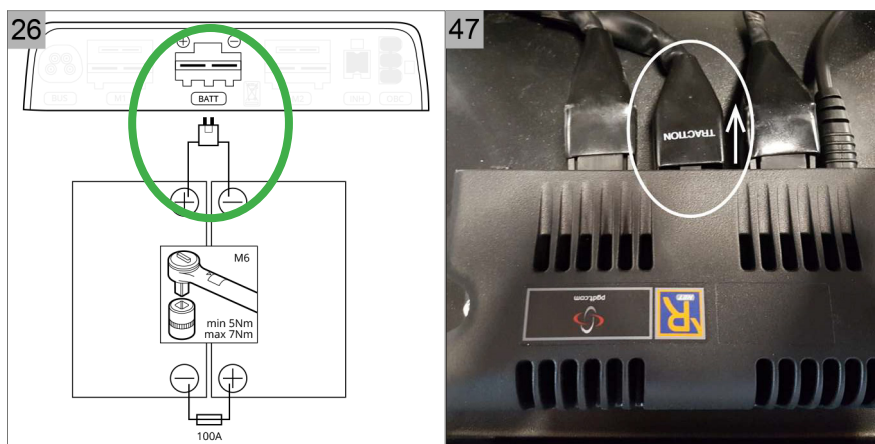
Joissakin tapauksissa on tarpeen irrottaa pääsulake:

1. Avaa kotelon kansi takaa vetämällä kannen vivuista.
2. Irrota kotelon kansi.
3. Irrota sulake.



Joissakin tapauksissa on tarpeen irrottaa ohjainyksikön virtajohto (katso kuva 47):

1. Avaa kahta pyörien välissä olevan kotelon nuppia.(edestä)
2. Irrota kotelon kansi.
3. Irrota virtajohto.



rehaco.

Yhteystiedot

info@rehaco.fi
+358 040 705 5886

Rehaco Oy
2447737-2

Haaransuontie 6 A 7
90240, Oulu



Wetac Motive Power B.V.

Galvanistraat 117

6716 AE Ede, Netherlands

Tel: 0031 318 696192

E-mail: info@wetac.com

To Whom it may Concern;

Certification for Non-dangerous Goods (Non-Hazardous)

Trade name:	Sealed Lead Acid Battery
Proper shipping name:	Batteries, Non-Spillable, and electric storage
Ingredient:	Case, Separator, Lead, Terminal, Safety valve
UN-code:	UN2800

We hereby certify that the above captioned goods are non dangerous and non-hazardous materials for Air Transportation of any nature. The consignment is fully described by proper Shipping name and packed, marked and in proper condition for carriage by air.

Temperature control during transportation is not required for the product.

We further hereby certify that the consignment is not classified as dangerous goods under the current edition of the **IMDG regulations** and all applicable carrier and governmental regulations.

Also the consignment is packed with protection of exposed terminals so as to prevent the potential danger by short-circuiting, according to special **Provision A67** under the **IATA Dangerous Goods Regulation**.

MOVE Batteries (all GEL- and AGM types*) are no subject to ADR.

We also acknowledge that we may be liable for damage resulting from any errors or omissions of this statement. We further agree that any carrier involved in the carriage of this consignment may rely upon this certification.

Yours Faithfully,

Wetac Motive Power B.V.
importer MOVE Batteries for Europe

* MOVE Batteries
- MTG
- MPG
- MPA
- MPX



Technical data sheet

MTG 60-12

MOVE MTG-Batteries are valve regulated lead-acid batteries for the light traction market. With our innovative Gel-technology and maintenance free design, MOVE MTG-Batteries are compatible with all universal cyclic applications.

Features

- Maintenance-free bloc batteries in Gel technology
- Stable high current performance for extreme conditions
- High-class patented safety valve
- Valve-regulated lead-acid battery filled with thixotropic gel.
- Classified as a non-spillable battery, not restricted for transport by:
 - Air (IATA/ICAO provision 67)
 - Ground (STB, DOT-CFR-HMR49)
 - Water (IMDG amendment 27)
- 700 cycles according to **IEC 254-1**



Specifications

Nominal Voltage	: 12V
80% DoD Voltage Cutoff	: 11.4V (1,90vpc)
Nominal capacity 1.75VPC	: 20hr rate 60Ah
Capacity @25°C	: 10hr rate 57Ah
	: 5hr rate 52Ah
	:
Self Discharge	: < 3% per month (20°C)
Charge Temperature	: Min. -10°C / Max. 50°C
Discharge Temperature	: Min. -10°C / Max. 50°C
Storage Temperature	: Min. 0°C / Max. 30°C
Storage Time	: 12 months

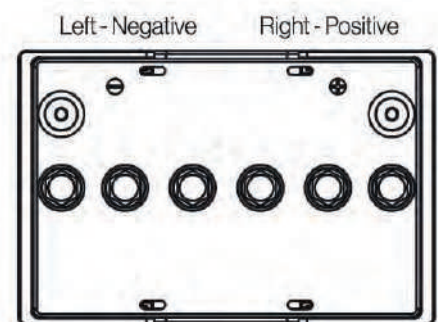
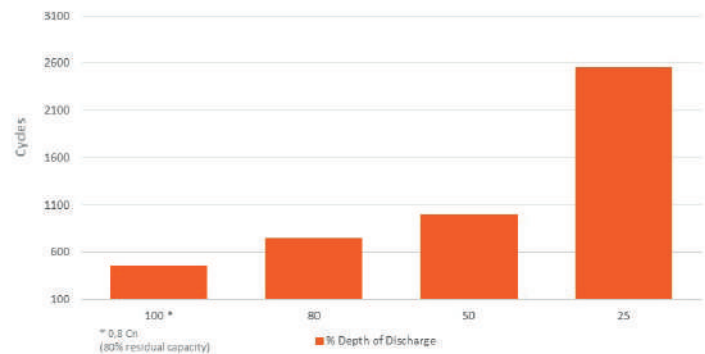
Dimensions

L x W x H (T) in mm	: 254 x 168 x 175 (177)
BCI-Group	: 34
Weight	: 20.5kg (±2%)
Terminal	: Female insert M6
Terminal Torque Setting	: 6 Nm

Applications:

- Electric Vehicles (EV)
- Home Mobility Equipment (HME)
- Cleaning Equipment
- Aerial working platforms (AWP)
- All cyclic applications

GEL Cycle Life vs Depth of Discharge at +25°C
Based on IEC 254-1





Technical data sheet

MTG 76-12

MOVE MTG-Batteries are valve regulated lead-acid batteries for the light traction market. With our innovative Gel-technology and maintenance free design, MOVE MTG-Batteries are compatible with all universal cyclic applications.

Features

- Maintenance-free bloc batteries in Gel technology
- Stable high current performance for extreme conditions
- High-class patented safety valve
- Valve-regulated lead-acid battery filled with thixotropic gel.
- Classified as a non-spillable battery, not restricted for transport by:
 - Air (IATA/ICAO provision 67)
 - Ground (STB, DOT-CFR-HMR49)
 - Water (IMDG amendment 27)
- 700 cycles according to **IEC 254-1**

Specifications

Nominal Voltage	:	12V
80% DoD Voltage Cutoff	:	11.4 (1,90vpc)
Nominal capacity 1.75VPC	:	20hr rate 76Ah
Capacity @25°C	:	10hr rate 73Ah
	:	5hr rate 66Ah
	:	
Self Discharge	:	< 3% per month (20°C)
Charge Temperature	:	Min. -10°C / Max. 50°C
Discharge Temperature	:	Min. -10°C / Max. 50°C
Storage Temperature	:	Min. 0°C / Max. 30°C
Storage Time	:	12 months

Dimensions

L x W x H (T) in mm	:	254 x 168 x 202.5 (204.5)
BCI-Group	:	24
Weight	:	24kg (±2%)
Terminal	:	Female insert M6
Terminal Torque Setting	:	6 Nm



Applications:

- Electric Vehicles (EV)
- Home Mobility Equipment (HME)
- Cleaning Equipment
- Aerial working platforms (AWP)
- All cyclic applications

GEL Cycle Life vs Depth of Discharge at +25°C
Based on IEC 254-1

