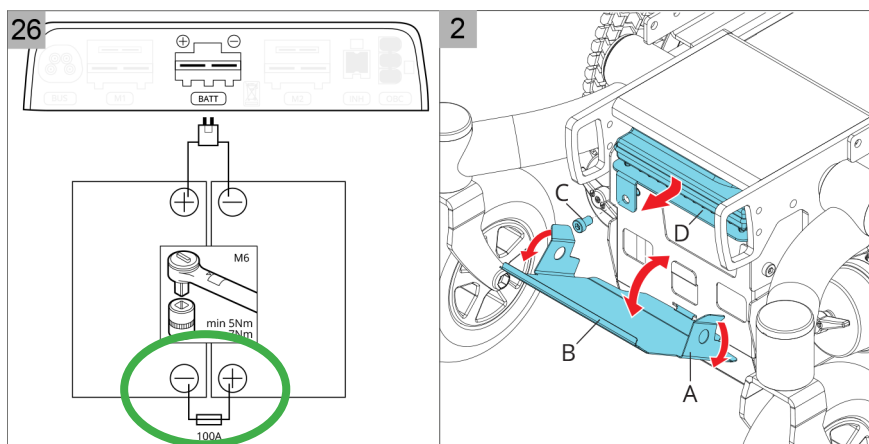


# Sulake & Powermoduuli Sango Slimline

rehaco.

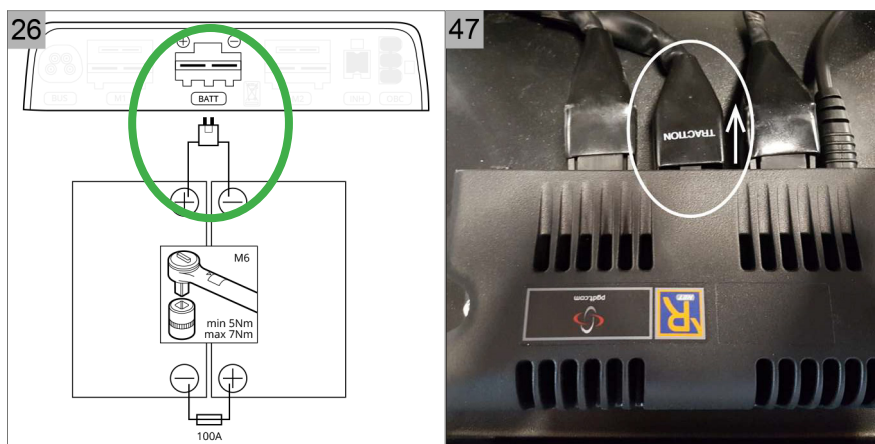
Joissakin tapauksissa on tarpeen irrottaa pääsulake:

1. Avaa kotelon kansi edestä vetämällä kannen vivuista.
2. Irrota kotelon kansi.
3. Irroita powerin kelkka
4. Irroita sulake



Joissakin tapauksissa on tarpeen irrottaa ohjainyksikön virtajohto (katso kuva 47):

1. Avaa kahta pyörien välissä olevan kotelon nuppia.(edestä)
2. Irrota kotelon kansi.
3. Irrota virtajohto.



rehaco.

Yhteystiedot

info@rehaco.fi  
+358 040 705 5886

Rehaco Oy  
2447737-2

Haaransuontie 6 A 7  
90240, Oulu



**Wetac Motive Power B.V.**

Galvanistraat 117

6716 AE Ede, Netherlands

Tel: 0031 318 696192

E-mail: info@wetac.com

To Whom it may Concern;

Certification for Non-dangerous Goods (Non-Hazardous)

Trade name:	Sealed Lead Acid Battery
Proper shipping name:	Batteries, Non-Spillable, and electric storage
Ingredient:	Case, Separator, Lead, Terminal, Safety valve
UN-code:	UN2800

We hereby certify that the above captioned goods are non dangerous and non-hazardous materials for Air Transportation of any nature. The consignment is fully described by proper Shipping name and packed, marked and in proper condition for carriage by air.

Temperature control during transportation is not required for the product.

We further hereby certify that the consignment is not classified as dangerous goods under the current edition of the **IMDG regulations** and all applicable carrier and governmental regulations.

Also the consignment is packed with protection of exposed terminals so as to prevent the potential danger by short-circuiting, according to special **Provision A67** under the **IATA Dangerous Goods Regulation**.

MOVE Batteries (all GEL- and AGM types\*) are no subject to ADR.

We also acknowledge that we may be liable for damage resulting from any errors or omissions of this statement. We further agree that any carrier involved in the carriage of this consignment may rely upon this certification.

Yours Faithfully,

Wetac Motive Power B.V.  
importer MOVE Batteries for Europe

\* MOVE Batteries  
- MTG  
- MPG  
- MPA  
- MPX

### APPLICATIONS

Powerchairs / home mobility equipment  
 Scooters, 3- and 4 wheels  
 Toys for children  
 Cleaning Machines  
 Personal Carriers  
 Utility Vehicles

### SPECIFICATIONS

Nominal Voltage	12V	
Nominal capacity @20 hour rate	50Ah	
Capacity at 25°C	10 hour rate	43Ah
	5 hour rate	40Ah
	1 hour rate	27Ah
Shelf time @20°C up to 70%	in months	9
Internal resistance (at 1 KHz)	approx. 7 mΩ	
Operating temperature for (dis)charge	-15°C to + 40°C	

### DIMENSIONS

Dimensions LxWxH (T) in mm	199x166x171 (171)
Weight	14,8kg (±2%)
Separator	AGM, Glass Mat
Case and cover	ABS (UL94-V0 optional)
Terminal	M6 Bolt
Torque setting (recommended)	M6: 6 Nm
Maximum allowable torque value	M6: 9 Nm

### CHARGING

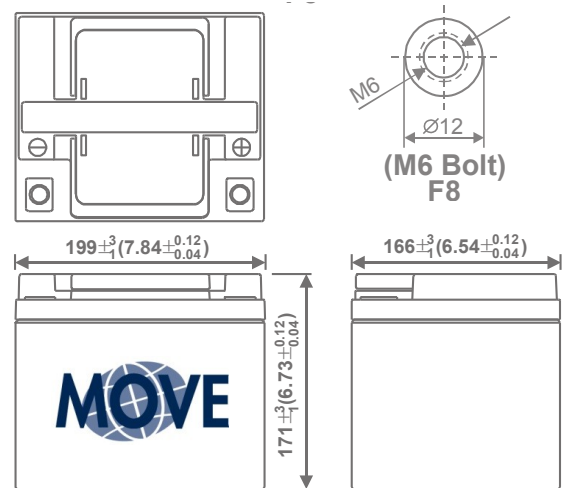
Charging Voltage cycle use 14,4 to 15 Volt  
 Float charge Voltage 13,5 to 13,8 Volt  
 Charging current, minimum 5A - maximum 10A

### CYCLE LIFE

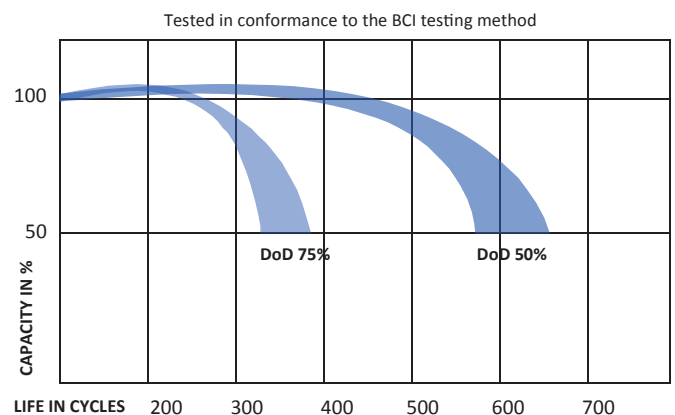
To maximize the cycle life of the battery, we recommend to charge the battery fully after use. The total life of the battery, is very dependant on the correct charge and depth of discharge per cycle.

### TRANSPORT INFORMATION

This battery is NON-SPILLABLE as defined in IATA Dangerous Goods Regulations Packing Instructions 806, Special Provision A67.



### BATTERY LIFE UNDER CYCLIC USE



\* Cycle life is measured with a discharge current 0,2C, charged 16h and rest capacity of 2/3 Cn

# A new AGM battery: the AGM Super Cycle battery

[www.victronenergy.com](http://www.victronenergy.com)

## A truly innovative battery

The AGM Super Cycle batteries are the result of recent battery electrochemistry developments.

The paste of the positive plates is less sensitive to softening, even in case of repeated 100% discharge of the battery, and new additives to the electrolyte reduce sulfation in case of deep discharge.

## Exceptional 100% depth of discharge (DoD) performance

Tests have shown that the Super Cycle battery does withstand at least three hundred 100% DoD cycles.

The tests consist of a daily discharge to 10,8V with  $I = 0,2C_{20}$ , followed by approximately two hours rest in discharged condition, and then a recharge with  $I = 0,2C_{20}$ .

The two hours rest period in discharged condition will damage most batteries within 100 cycles, but not the Super Cycle battery.

We recommend the Super Cycle battery for applications where an occasional discharge to 100% DoD, or frequent discharge to 60-80% DoD is expected.

## Smaller and lighter

An additional advantage of the new chemistry is a slightly smaller size and less weight compared to our standard deep cycle AGM batteries.

## Low internal resistance

The internal resistance is also slightly lower compared to our standard deep cycle AGM batteries.

## Recommended charge voltage:

	Float Service	Cycle service Normal	Cycle service Fast recharge
Absorption		14,2 - 14,6 V	14,6 - 14,9 V
Float	13,5 - 13,8 V	13,5 - 13,8 V	13,5 - 13,8 V
Storage	13,2 - 13,5 V	13,2 - 13,5 V	13,2 - 13,5 V

## Specifications

Article number	V	Ah C5 (10,8V)	Ah C10 (10,8V)	Ah C20 (10,8V)	l x w x h mm	Weight kg	CCA @0°F	RES CAP @80°F	Terminals
BAT412015080	12	13	14	15	151 x 100 x 103	4,1			Faston
BAT412025081	12	22	24	25	181 x 77 x 175	6,5			M5 insert
BAT412038081	12	34	36	38	267 x 77 x 175	9,5			M5 insert
BAT412060081	12	52	56	60	224 x 135 x 178	14	300	90	M5 insert
BAT412110081	12	82	90	100	260 x 168 x 215	26	500	170	M6 insert
BAT412112081	12	105	114	125	330 x 171 x 214	33	550	220	M8 insert
BAT412117081	12	145	153	170	336 x 172 x 280	45	600	290	M8 insert
BAT412123081	12	200	210	230	532 x 207 x 226	57	700	400	M8 insert

## Cycle life

≥ 300 cycles @ 100% DoD (discharge to 10,8V with  $I = 0,2C_{20}$ , followed by approximately two hours rest in discharged condition, and then a recharge with  $I = 0,2C_{20}$ )

≥ 700 cycles @ 60% DoD (discharge during three hours with  $I = 0,2C_{20}$ , immediately followed by recharge at  $I = 0,2C_{20}$ )

≥ 1000 cycles @ 40% DoD (discharge during two hours with  $I = 0,2C_{20}$ , immediately followed by recharge at  $I = 0,2C_{20}$ )



Super Cycle Battery 12V 230Ah